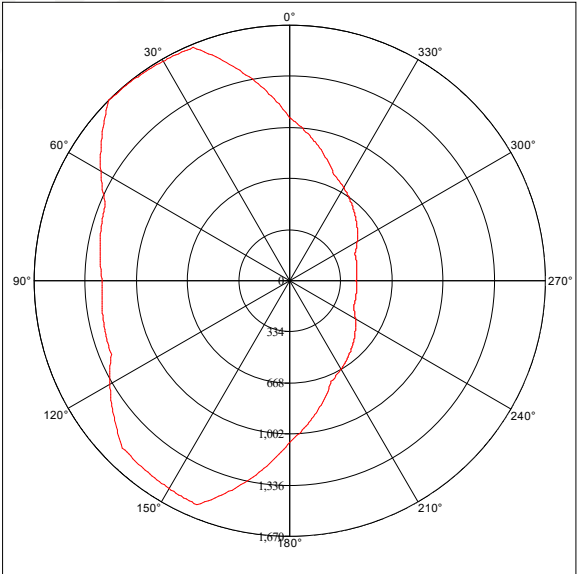
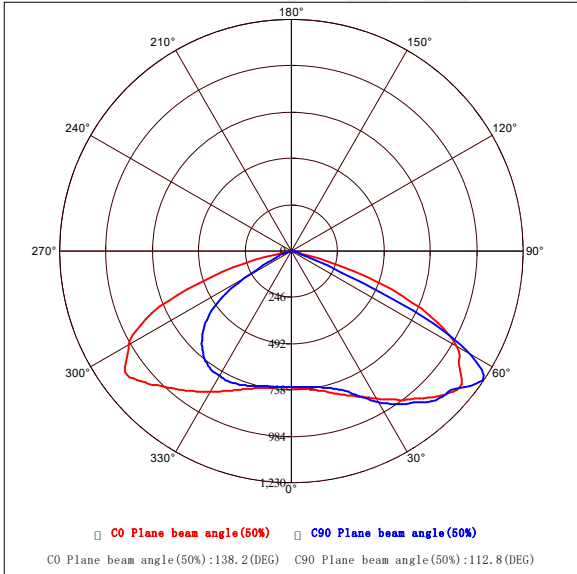


Goniophotometer Test Report

| | | | | | | |
|---|-----|-------|------------------|------------|----------------------------------|------|
| Measured Para U: 228.7V I: 185.0mA P: 39.71W PF: 0.938 Test LM: 3588.98lm | | | | | | |
| Lamp Name: PY-led560-40W | | | Lamp Type: | | Weight(kg): | |
| Lamp ID: | | | Lamp Spec: 40w | | Shape Size: | |
| Manufactory: 普达照明 | | | Sur(m^2): | | Protect Angle(Deg): TYPEIII-S | |
| Light Source Data | | | Photometric Data | | | |
| Model | 40w | | Peak Value(cd) | 1669.1 | Efficiency(lm/w) | 90.4 |
| Nominal P(w) | | 40.0 | Position | 45.0, 56.0 | UP(C0-C180) | 0.0 |
| Rated Volt(v) | | 230.0 | Total Flux(lm) | 3588.983 | Down(C0-C180) | 61.7 |
| Rated Flux(lm) | | 1.0 | Up Flux Rate(%) | 0.0 | UP(C180-C360) | 0.0 |
| Illuminant QTY | | 48 | Dw Flux Rate(%) | 100.0 | Down(C180-C360) | 38.3 |

Planar Intensity Distribution Curve

Peak Point Conical surface Curve



Gama Angle Range:-90 - 90(Deg)

Gama interval(Deg): 1

Temperature(Deg): 25

Tester:

Distance(m): 10.95

Test System: ZWL Goniophotometer System V3.0

C Angle Range:0 - 180(Deg)

C interval(Deg): 22.5

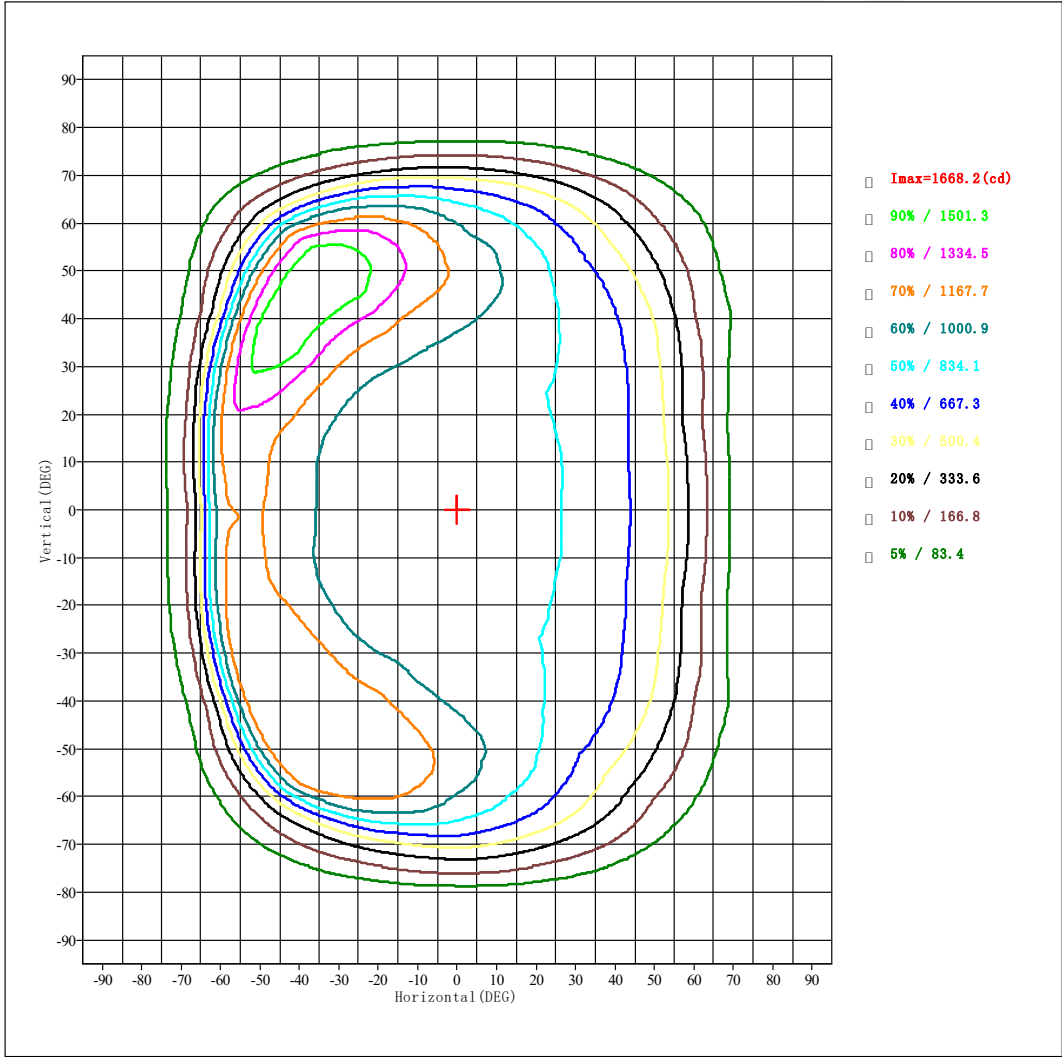
Humidity(%): 60

Date: 2024/1/24

Remark:

| | | |
|---|-----------------------|-------------------------------|
| Measured Para U: 228.7V I: 185.0mA P: 39.71W PF: 0.938 Test LM: 3588.98lm | | |
| Lamp Name: PY-led560-40W | Lamp Type: | Weight(kg): |
| Lamp ID: | Lamp Spec: 40w | Shape Size: |
| Manufactory: 普达照明 | Sur(m ²): | Protect Angle(Deg): TYPEIII-S |

Planar IsoCandela Curve



Gama Angle Range:-90 - 90(Deg)

Gama interval(Deg): 1

Temperature(Deg): 25

Tester:

Distance(m): 10.95

Test System: ZWL Goniophotometer System V3.0

C Angle Range:0 - 180(Deg)

C interval(Deg): 22.5

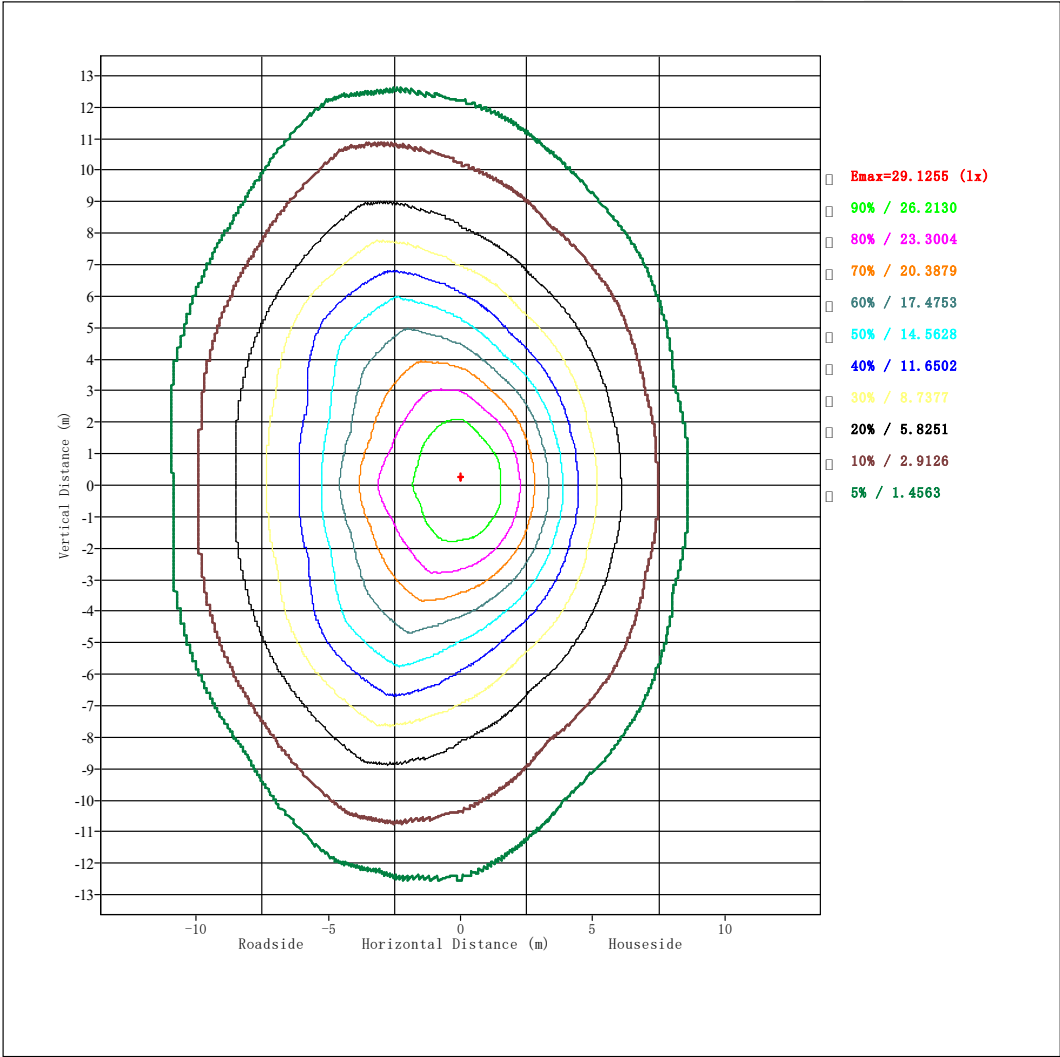
Humidity(%): 60

Date: 2024/1/24

Remark:

| | | |
|---|------------------------|-------------------------------|
| Measured Para U: 228.7V I: 185.0mA P: 39.71W PF: 0.938 Test LM: 3588.98lm | | |
| Lamp Name: PY-led560-40W | Lamp Type: | Weight(kg): |
| Lamp ID: | Lamp Spec: 40w | Shape Size: |
| Manufactory: 普达照明 | Sur (m ²): | Protect Angle(Deg): TYPEIII-S |

Planar Isolux curve



Gama Angle Range:-90 - 90(Deg)

Gama interval(Deg): 1

Temperature(Deg): 25

Tester:

Distance(m): 10.95

Test System: ZWL Goniophotometer System V3.0

C Angle Range:0 - 180(Deg)

C interval(Deg): 22.5

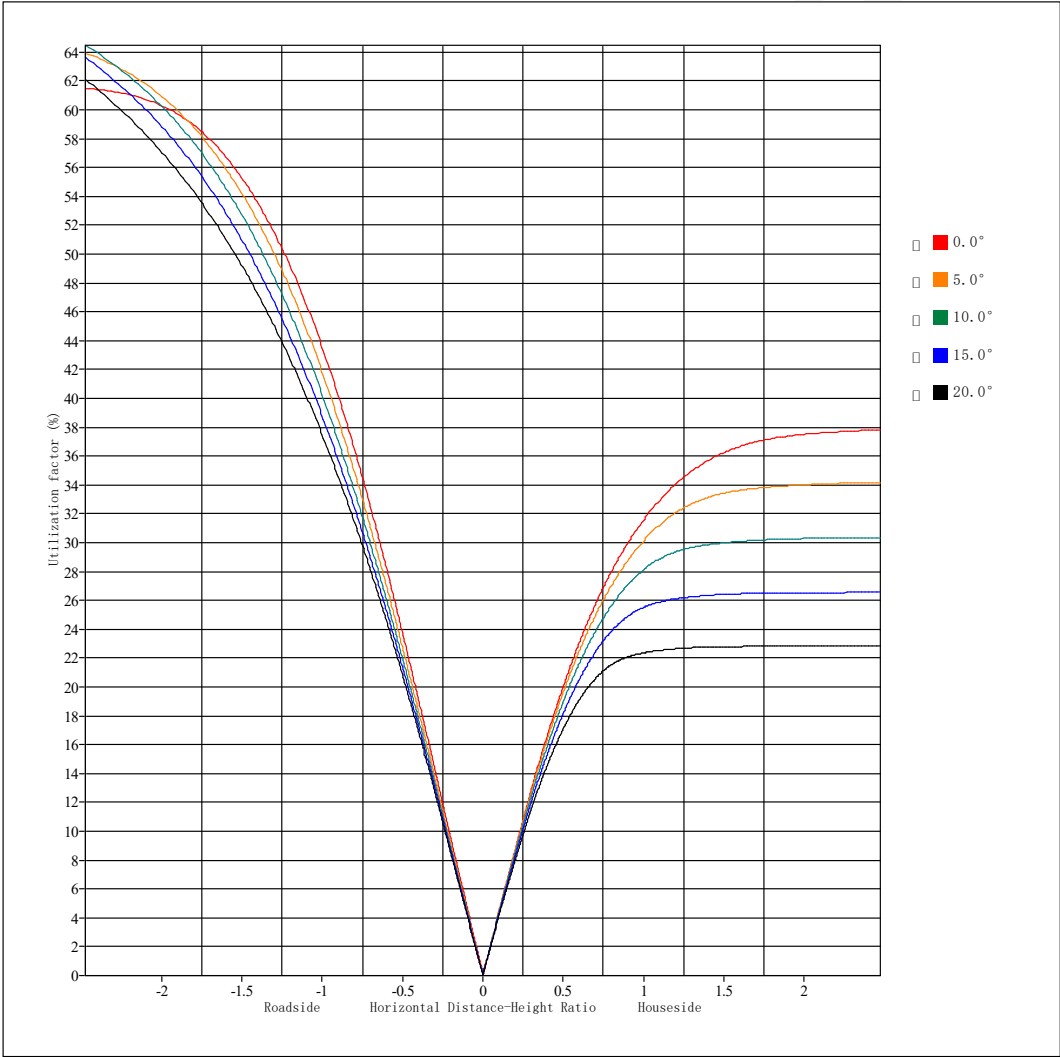
Humidity(%): 60

Date: 2024/1/24

Remark:

| | | |
|---|------------------------|-------------------------------|
| Measured Para U: 228.7V I: 185.0mA P: 39.71W PF: 0.938 Test LM: 3588.98lm | | |
| Lamp Name: PY-led560-40W | Lamp Type: | Weight(kg): |
| Lamp ID: | Lamp Spec: 40w | Shape Size: |
| Manufactory: 普达照明 | Sur (m ²): | Protect Angle(Deg): TYPEIII-S |

Utilization Coefficient



Gama Angle Range:-90 - 90(Deg)

Gama interval(Deg): 1

Temperature(Deg): 25

Tester:

Distance(m): 10.95

Test System: ZWL Goniophotometer System V3.0

C Angle Range:0 - 180(Deg)

C interval(Deg): 22.5

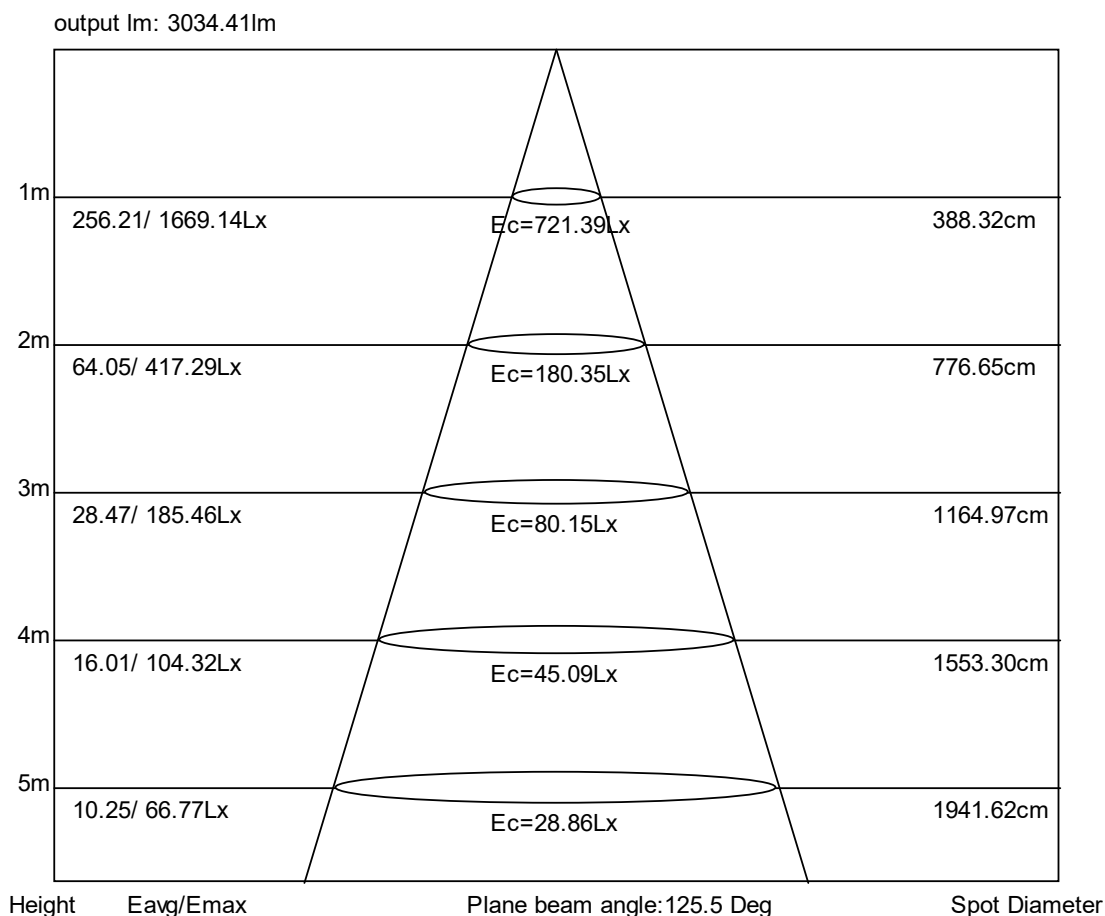
Humidity(%): 60

Date: 2024/1/24

Remark:

| | | |
|---|------------------------|----------------------------------|
| Measured Para U: 228.7V I: 185.0mA P: 39.71W PF: 0.938 Test LM: 3588.98lm | | |
| Lamp Name: PY-led560-40W | Lamp Type: | Weight(kg): |
| Lamp ID: | Lamp Spec: 40w | Shape Size: |
| Manufactory: 普达照明 | Sur (m ²): | Protect Angle(Deg): TYPEIII-S |

Average Illumination



Gama Angle Range:-90 - 90(Deg)

Gama interval(Deg): 1

Temperature(Deg): 25

Tester:

Distance(m): 10.95

Test System: ZWL Goniophotometer System V3.0

C Angle Range:0 - 180(Deg)

C interval(Deg): 22.5

Humidity(%): 60

Date: 2024/1/24

Remark:

| | | |
|---|-----------------------|----------------------------------|
| Measured Para U: 228.7V I: 185.0mA P: 39.71W PF: 0.938 Test LM: 3588.98lm | | |
| Lamp Name: PY-led560-40W | Lamp Type: | Weight (kg): |
| Lamp ID: | Lamp Spec: 40w | Shape Size: |
| Manufactory: 普达照明 | Sur(m ²): | Protect Angle(Deg): TYPEIII-S |

Ring-shaped Flux Data Table

| Gm\C(Deg) | 0 | 45 | 90 | 135 | 180 | 225 | 270 | 315 | Range | Ring | T(lm) |
|-----------|------|------|------|------|------|------|------|------|---------|------|-------|
| 5 | 736 | 730 | 724 | 723 | 727 | 723 | 723 | 723 | 0-5 | 17.3 | 17.3 |
| 10 | 752 | 744 | 734 | 734 | 738 | 733 | 731 | 734 | 5-10 | 52.3 | 69.6 |
| 15 | 780 | 765 | 755 | 756 | 757 | 751 | 743 | 751 | 10-15 | 88.6 | 158 |
| 20 | 816 | 798 | 791 | 786 | 785 | 769 | 759 | 774 | 15-20 | 127 | 285 |
| 25 | 856 | 842 | 859 | 830 | 824 | 787 | 768 | 796 | 20-25 | 168 | 453 |
| 30 | 912 | 905 | 934 | 887 | 867 | 798 | 765 | 809 | 25-30 | 212 | 666 |
| 35 | 970 | 991 | 1001 | 967 | 914 | 796 | 753 | 812 | 30-35 | 259 | 924 |
| 40 | 1028 | 1104 | 1056 | 1077 | 961 | 787 | 721 | 800 | 35-40 | 307 | 1231 |
| 45 | 1098 | 1268 | 1114 | 1224 | 1016 | 755 | 665 | 766 | 40-45 | 356 | 1587 |
| 50 | 1148 | 1482 | 1143 | 1420 | 1071 | 693 | 588 | 710 | 45-50 | 407 | 1994 |
| 55 | 1079 | 1664 | 1223 | 1544 | 1073 | 604 | 462 | 625 | 50-55 | 451 | 2444 |
| 60 | 998 | 1521 | 1070 | 1420 | 995 | 482 | 261 | 497 | 55-60 | 457 | 2901 |
| 65 | 786 | 1026 | 485 | 891 | 835 | 276 | 109 | 294 | 60-65 | 381 | 3283 |
| 70 | 464 | 281 | 85.6 | 189 | 555 | 81.4 | 58.3 | 92 | 65-70 | 215 | 3497 |
| 75 | 126 | 40.4 | 32 | 28.8 | 228 | 43.3 | 18.8 | 46.7 | 70-75 | 71.8 | 3569 |
| 80 | 15.1 | 11.5 | 5.37 | 5.19 | 24.5 | 18.1 | 0.44 | 19.7 | 75-80 | 16.4 | 3585 |
| 85 | 2.19 | 0.37 | 0.01 | 0.07 | 5.06 | 4.27 | 0.05 | 4.45 | 80-85 | 3.23 | 3589 |
| 90 | 0 | 0 | 0 | 0 | 0.2 | 0.1 | 0.02 | 0.17 | 85-90 | 0.45 | 3589 |
| 95 | | | | | | | | | 90-95 | | |
| 100 | | | | | | | | | 95-100 | | |
| 105 | | | | | | | | | 100-105 | | |
| 110 | | | | | | | | | 105-110 | | |
| 115 | | | | | | | | | 110-115 | | |
| 120 | | | | | | | | | 115-120 | | |
| 125 | | | | | | | | | 120-125 | | |
| 130 | | | | | | | | | 125-130 | | |
| 135 | | | | | | | | | 130-135 | | |
| 140 | | | | | | | | | 135-140 | | |
| 145 | | | | | | | | | 140-145 | | |
| 150 | | | | | | | | | 145-150 | | |
| 155 | | | | | | | | | 150-155 | | |
| 160 | | | | | | | | | 155-160 | | |
| 165 | | | | | | | | | 160-165 | | |
| 170 | | | | | | | | | 165-170 | | |
| 175 | | | | | | | | | 170-175 | | |
| 180 | | | | | | | | | 175-180 | | |

Gama Angle Range:-90 - 90(Deg)

Gama interval(Deg): 1

Temperature(Deg): 25

Tester:

Distance(m): 10.95

Test System: ZWL Goniophotometer System V3.0

C Angle Range:0 - 180(Deg)

C interval(Deg): 22.5

Humidity(%): 60

Date: 2024/1/24

Remark:

| | | |
|---|-----------------------|----------------------------------|
| Measured Para U: 228.7V I: 185.0mA P: 39.71W PF: 0.938 Test LM: 3588.98lm | | |
| Lamp Name: PY-led560-40W | Lamp Type: | Weight(kg): |
| Lamp ID: | Lamp Spec: 40w | Shape Size: |
| Manufactory: 普达照明 | Sur(m ²): | Protect Angle(Deg): TYPEIII-S |

CD Table

| Gm\C(Deg) | 0 | 20 | 40 | 60 | 80 | 100 | 120 | 140 | 160 | 180 | 200 | 220 | 240 | 260 | 280 | 300 | 320 | 340 |
|-----------|------|------|------|------|------|------|------|------|------|------|------|------|------|------|------|------|------|------|
| 5.0 | 736 | 731 | 730 | 727 | 725 | 723 | 722 | 723 | 722 | 727 | 727 | 724 | 724 | 723 | 724 | 724 | 723 | 726 |
| 10.0 | 752 | 746 | 744 | 739 | 735 | 732 | 731 | 734 | 734 | 738 | 739 | 735 | 734 | 732 | 733 | 735 | 735 | 740 |
| 15.0 | 780 | 771 | 766 | 758 | 754 | 751 | 750 | 756 | 758 | 757 | 758 | 752 | 751 | 746 | 747 | 752 | 753 | 760 |
| 20.0 | 816 | 809 | 800 | 789 | 788 | 784 | 779 | 788 | 794 | 785 | 782 | 772 | 769 | 763 | 762 | 770 | 777 | 790 |
| 25.0 | 856 | 860 | 846 | 838 | 849 | 845 | 828 | 833 | 843 | 824 | 807 | 791 | 779 | 771 | 771 | 783 | 800 | 819 |
| 30.0 | 912 | 929 | 911 | 900 | 918 | 914 | 888 | 893 | 906 | 867 | 833 | 804 | 782 | 769 | 771 | 789 | 816 | 850 |
| 35.0 | 970 | 1019 | 998 | 975 | 986 | 980 | 958 | 973 | 985 | 914 | 855 | 807 | 774 | 757 | 759 | 782 | 824 | 877 |
| 40.0 | 1028 | 1128 | 1112 | 1056 | 1045 | 1038 | 1036 | 1081 | 1081 | 961 | 864 | 801 | 749 | 724 | 726 | 756 | 816 | 892 |
| 45.0 | 1098 | 1279 | 1276 | 1172 | 1117 | 1110 | 1147 | 1231 | 1224 | 1016 | 861 | 773 | 702 | 669 | 672 | 710 | 788 | 895 |
| 50.0 | 1148 | 1467 | 1488 | 1294 | 1166 | 1155 | 1255 | 1425 | 1400 | 1071 | 841 | 719 | 631 | 592 | 595 | 641 | 738 | 876 |
| 55.0 | 1079 | 1583 | 1662 | 1414 | 1249 | 1233 | 1349 | 1553 | 1520 | 1073 | 778 | 633 | 524 | 471 | 476 | 540 | 659 | 815 |
| 60.0 | 998 | 1546 | 1543 | 1365 | 1163 | 1135 | 1288 | 1450 | 1484 | 995 | 639 | 505 | 354 | 272 | 277 | 367 | 525 | 668 |
| 65.0 | 786 | 1274 | 1095 | 879 | 624 | 591 | 784 | 967 | 1189 | 835 | 492 | 312 | 168 | 110 | 113 | 179 | 333 | 511 |
| 70.0 | 464 | 655 | 369 | 208 | 122 | 109 | 156 | 259 | 514 | 555 | 276 | 115 | 67.8 | 59.3 | 60 | 72.5 | 128 | 282 |
| 75.0 | 126 | 139 | 62.2 | 38.6 | 34.5 | 33.9 | 33.7 | 39.8 | 97.8 | 228 | 72.3 | 44.7 | 27.9 | 19.2 | 19.2 | 29.1 | 50.3 | 71.1 |
| 80.0 | 15.1 | 18.3 | 13.1 | 12.1 | 8.45 | 6.92 | 7.63 | 6.51 | 12.9 | 24.5 | 17.9 | 17.8 | 7.6 | 1.17 | 0.63 | 7.35 | 20.1 | 20.6 |
| 85.0 | 2.19 | 1.93 | 0.7 | 0.3 | 0.12 | 0.1 | 0.17 | 0.41 | 2.05 | 5.06 | 4.05 | 4.19 | 1.48 | 0.04 | 0.03 | 1.53 | 5.32 | 7.64 |
| 90.0 | 0 | 0.07 | 0.02 | 0.07 | 0.04 | 0.02 | 0.03 | 0.02 | 0.1 | 0.2 | 0.56 | 0.21 | 0.03 | 0.01 | 0.01 | 0.06 | 0.33 | 0.78 |
| 95.0 | | | | | | | | | | | | | | | | | | |
| 100.0 | | | | | | | | | | | | | | | | | | |
| 105.0 | | | | | | | | | | | | | | | | | | |
| 110.0 | | | | | | | | | | | | | | | | | | |
| 115.0 | | | | | | | | | | | | | | | | | | |
| 120.0 | | | | | | | | | | | | | | | | | | |
| 125.0 | | | | | | | | | | | | | | | | | | |
| 130.0 | | | | | | | | | | | | | | | | | | |
| 135.0 | | | | | | | | | | | | | | | | | | |
| 140.0 | | | | | | | | | | | | | | | | | | |
| 145.0 | | | | | | | | | | | | | | | | | | |
| 150.0 | | | | | | | | | | | | | | | | | | |
| 155.0 | | | | | | | | | | | | | | | | | | |
| 160.0 | | | | | | | | | | | | | | | | | | |
| 165.0 | | | | | | | | | | | | | | | | | | |
| 170.0 | | | | | | | | | | | | | | | | | | |
| 175.0 | | | | | | | | | | | | | | | | | | |
| 180.0 | | | | | | | | | | | | | | | | | | |

Gama Angle Range:-90 - 90(Deg)

C Angle Range:0 - 180(Deg)

Gama interval(Deg): 1

C interval(Deg): 22.5

Temperature(Deg): 25

Humidity(%): 60

Tester:

Date: 2024/1/24

Distance(m): 10.95

Remark:

Test System: ZWL Goniophotometer System V3.0