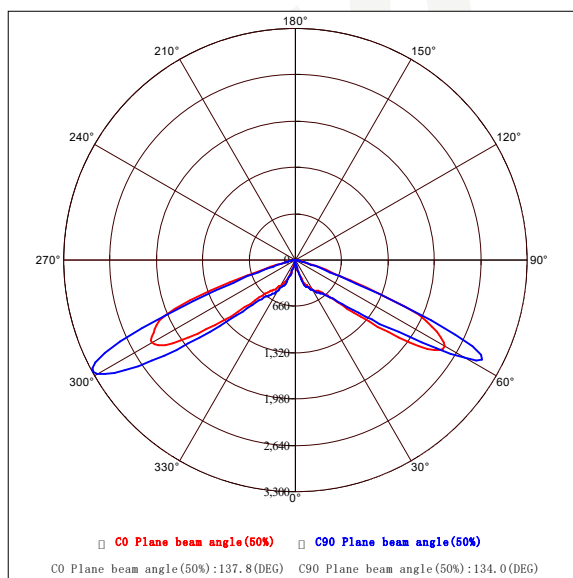


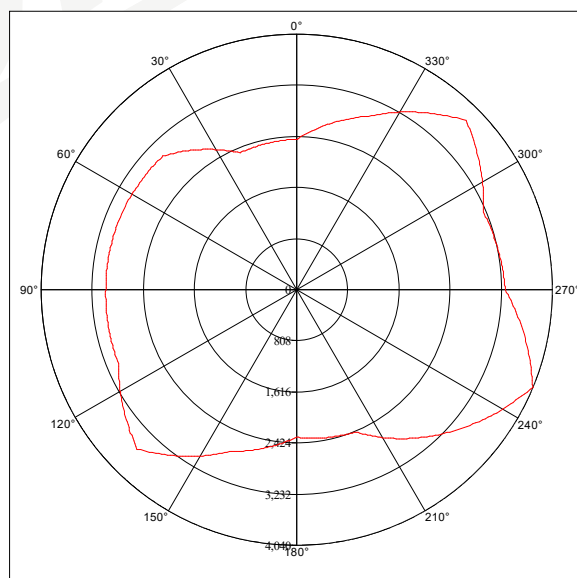
Goniophotometer Test Report

Measured Para U: 218.9V I: 255.0mA P: 54.24W PF: 0.972 Test LM: 6203.44lm						
Lamp Name:			Lamp Type:		Weight (kg) :	
Lamp ID:			Lamp Spec:		Shape Size:	
Manufactory:			Sur (m ²) :		Protect Angle (Deg) :	
Light Source Data			Photometric Data			
Model			Peak Value (cd)	4037. 7	Efficiency (lm/w)	114. 4
Nominal P (w)		0. 0	Position	247. 5, 61. 0	UP (C0-C180)	0. 0
Rated Volt (v)		0. 0	Total Flux (lm)	6203. 437	Down (C0-C180)	47. 2
Rated Flux (lm)		0. 0	Up Flux Rate (%)	0. 0	UP (C180-C360)	0. 0
Illuminant QTY		0	Dw Flux Rate (%)	100. 0	Down (C180-C360)	52. 8

Planar Intensity Distribution Curve



Peak Point Conical surface Curve



Gama Angle Range:-90 - 90(Deg)

Gama interval(Deg): 1

Temperature(Deg): 25

Tester:

Distance(m): 10.95

Test System: ZWL Goniophotometer System V3.0

C Angle Range:0 - 180(Deg)

C interval(Deg): 22.5

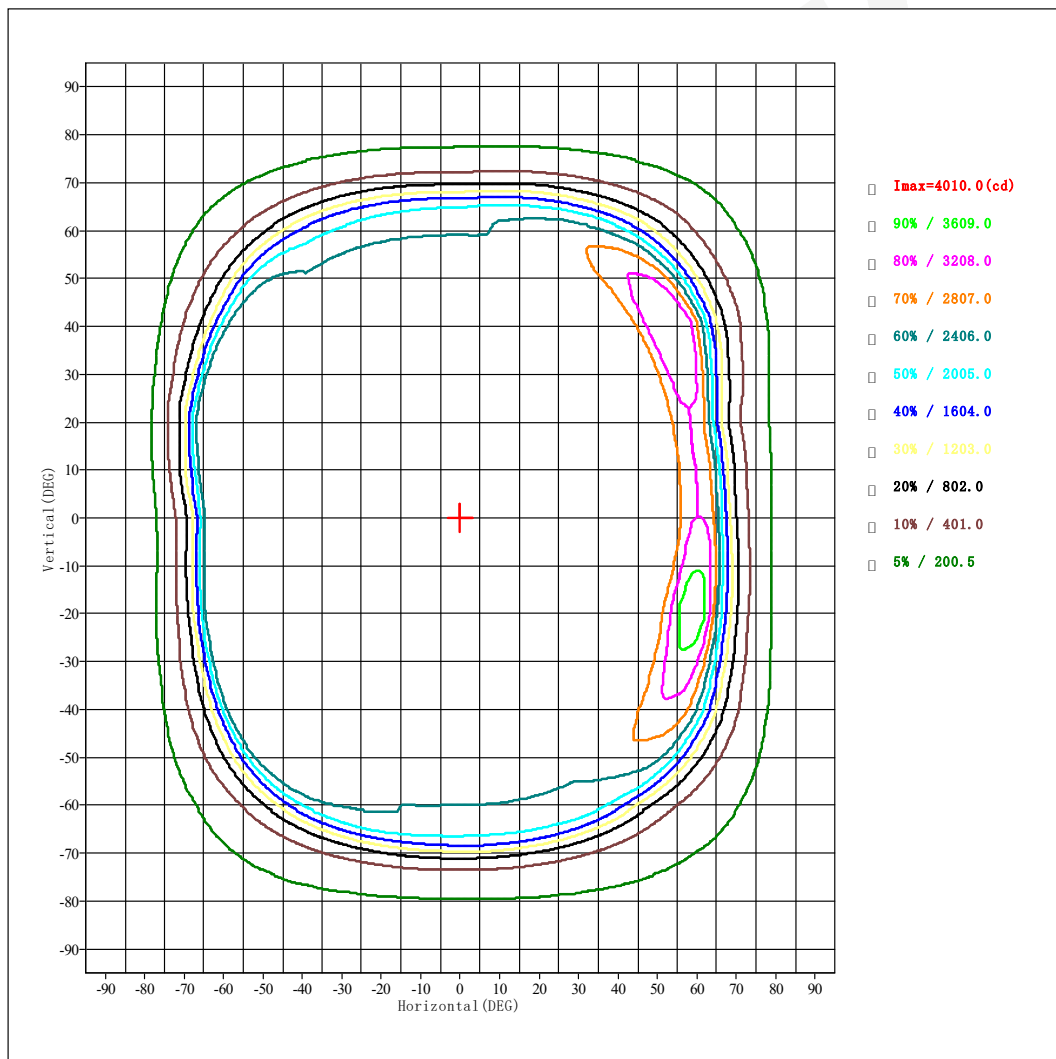
Humidity(%): 60

Date: 2023/9/18

Remark:

Measured Para U: 218.9V I: 255.0mA P: 54.24W PF: 0.972 Test LM: 6203.44lm		
Lamp Name:	Lamp Type:	Weight(kg):
Lamp ID:	Lamp Spec:	Shape Size:
Manufactory:	Sur(m ²):	Protect Angle(Deg):

Planar IsoCandela Curve



Gama Angle Range:-90 - 90(Deg)

Gama interval(Deg): 1

Temperature(Deg): 25

Tester:

Distance(m): 10.95

Test System: ZWL Goniophotometer System V3.0

C Angle Range:0 - 180(Deg)

C interval(Deg): 22.5

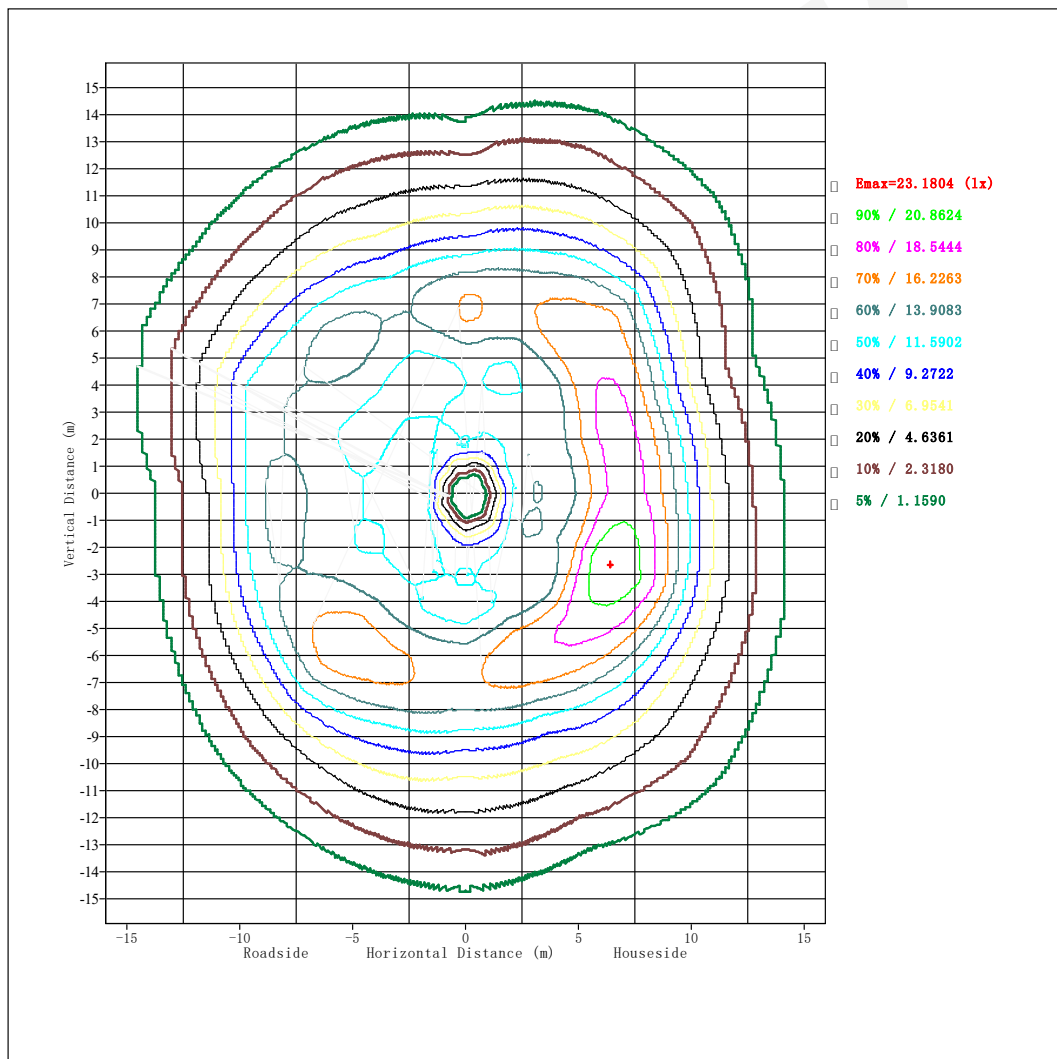
Humidity(%): 60

Date: 2023/9/18

Remark:

Measured Para U: 218.9V I: 255.0mA P: 54.24W PF: 0.972 Test LM: 6203.44lm		
Lamp Name:	Lamp Type:	Weight(kg):
Lamp ID:	Lamp Spec:	Shape Size:
Manufactory:	Sur (m ²):	Protect Angle(Deg):

Planar Isolux curve



Gama Angle Range:-90 - 90(Deg)

Gama interval(Deg): 1

Temperature(Deg): 25

Tester:

Distance(m): 10.95

Test System: ZWL Goniophotometer System V3.0

C Angle Range:0 - 180(Deg)

C interval(Deg): 22.5

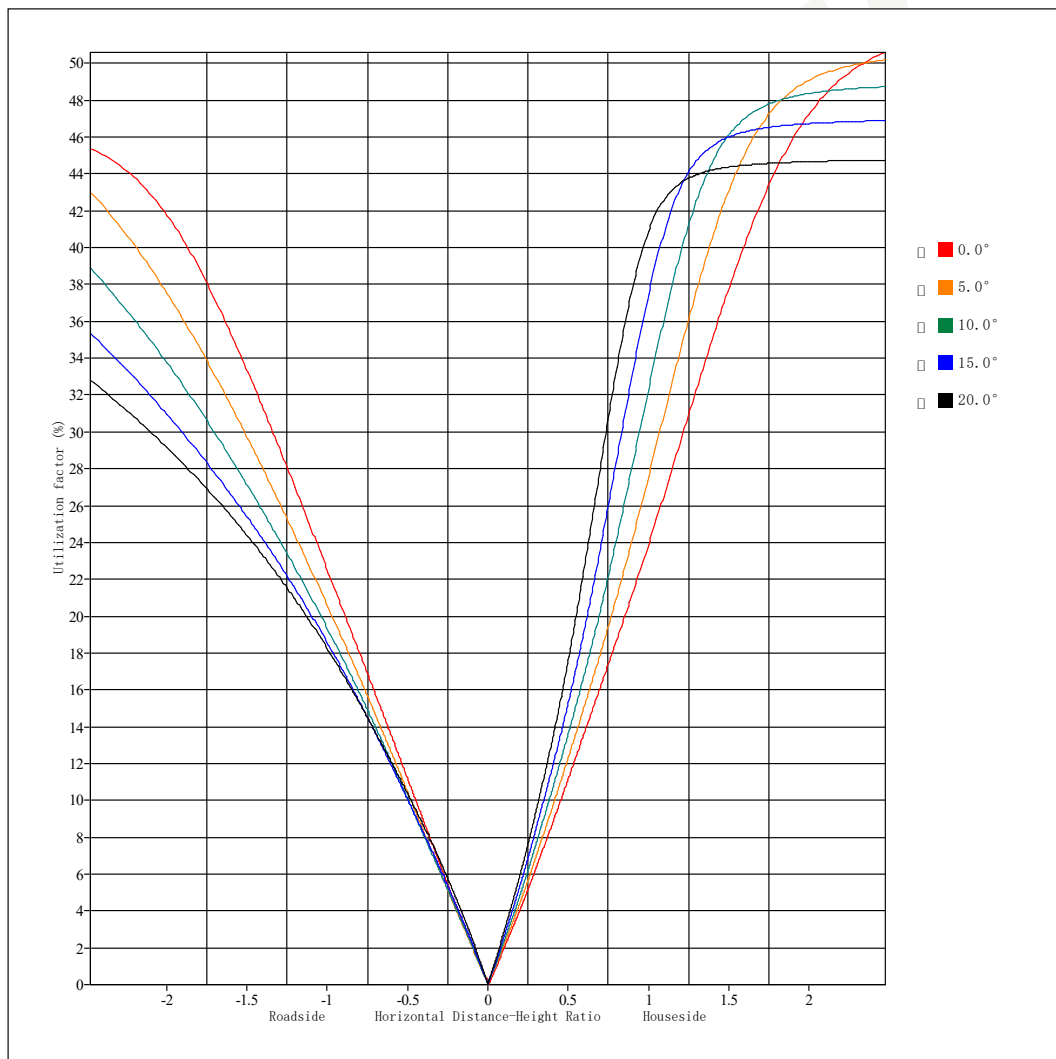
Humidity(%): 60

Date: 2023/9/18

Remark:

Measured Para U: 218.9V I: 255.0mA P: 54.24W PF: 0.972 Test LM: 6203.44lm		
Lamp Name:	Lamp Type:	Weight(kg):
Lamp ID:	Lamp Spec:	Shape Size:
Manufactory:	Sur (m ²):	Protect Angle(Deg):

Utilization Coefficient



Gama Angle Range:-90 - 90(Deg)

Gama interval(Deg): 1

Temperature(Deg): 25

Tester:

Distance(m): 10.95

Test System: ZWL Goniophotometer System V3.0

C Angle Range:0 - 180(Deg)

C interval(Deg): 22.5

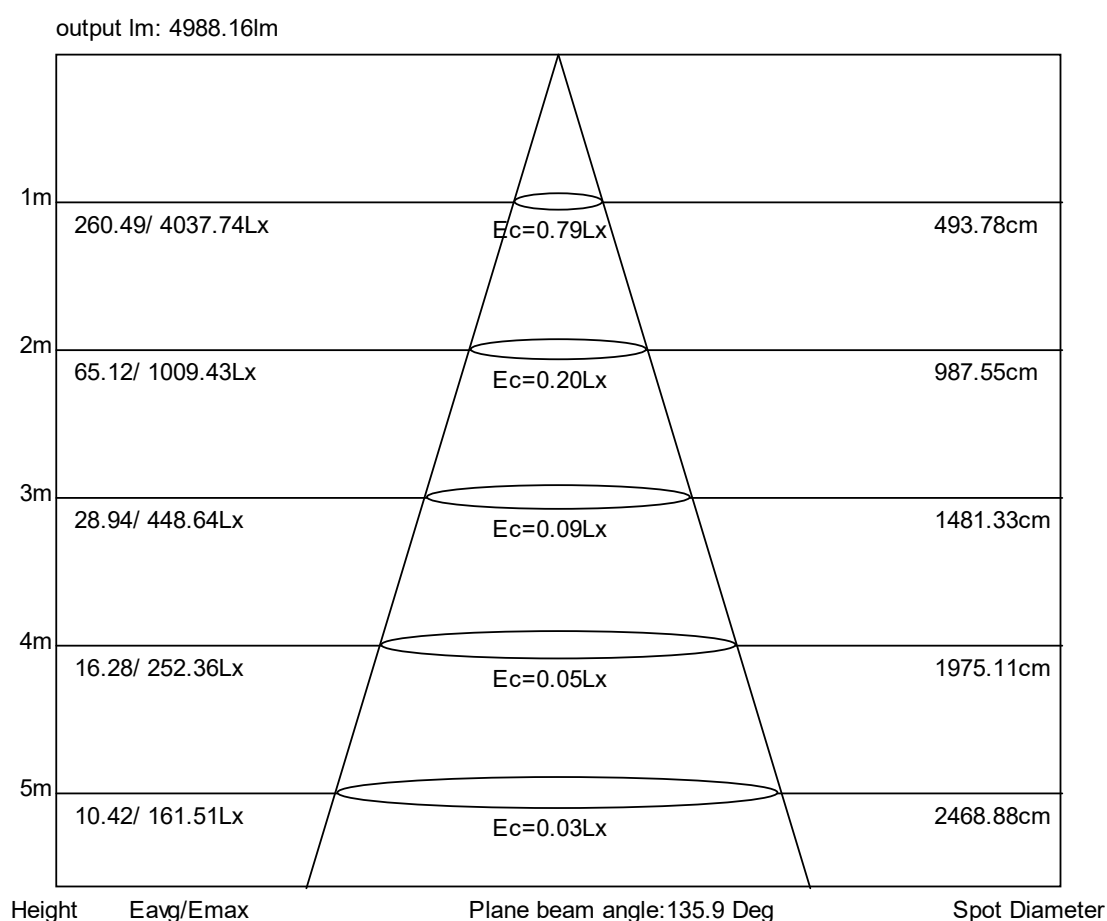
Humidity(%): 60

Date: 2023/9/18

Remark:

Measured Para U: 218.9V I: 255.0mA P: 54.24W PF: 0.972 Test LM: 6203.44lm		
Lamp Name:	Lamp Type:	Weight(kg):
Lamp ID:	Lamp Spec:	Shape Size:
Manufactory:	Sur (m ²):	Protect Angle(Deg):

Average Illumination



Gama Angle Range:-90 - 90(Deg)

Gama interval(Deg): 1

Temperature(Deg): 25

Tester:

Distance(m): 10.95

Test System: ZWL Goniophotometer System V3.0

C Angle Range:0 - 180(Deg)

C interval(Deg): 22.5

Humidity(%): 60

Date: 2023/9/18

Remark:

Measured Para U: 218.9V I: 255.0mA P: 54.24W PF: 0.972 Test LM: 6203.44lm		
Lamp Name:	Lamp Type:	Weight (kg):
Lamp ID:	Lamp Spec:	Shape Size:
Manufactory:	Sur (m ²):	Protect Angle (Deg):

Ring-shaped Flux Data Table

Gm\C (Deg)	0	45	90	135	180	225	270	315	Range	Ring	T (lm)
5	11.1	14.9	13	8.8	2.47	1.53	2.37	3.86	0-5	0.08	0.08
10	83.8	110	101	71.3	20.2	16.2	21.6	25.1	5-10	1.96	2.04
15	232	236	251	213	114	100	126	141	10-15	13.5	15.6
20	332	362	391	349	251	232	287	280	15-20	41.9	57.4
25	432	394	447	396	343	378	397	403	20-25	75.6	133
30	500	488	508	513	438	482	519	484	25-30	112	245
35	539	547	567	569	522	589	610	592	30-35	156	401
40	636	613	655	670	586	672	714	675	35-40	200	601
45	882	785	838	891	858	918	1004	865	40-45	276	877
50	1437	1172	1219	1400	1400	1645	1670	1344	45-50	451	1329
55	2206	1966	1874	2339	2058	2556	2595	2418	50-55	788	2117
60	2451	2893	2883	3431	2366	3201	3296	3592	55-60	1216	3333
65	2013	2788	2346	3172	2165	2964	2592	3775	60-65	1439	4772
70	699	1250	584	1033	1126	1513	820	1770	65-70	990	5761
75	170	374	146	296	245	377	230	444	70-75	312	6074
80	56.9	111	49.9	89.5	81.8	119	82.7	145	75-80	84.9	6158
85	29.7	28.4	21.2	26.1	42.9	47.3	39.3	52.1	80-85	29.7	6188
90	21.8	21.4	16	19.2	26.3	27.6	22.3	27.1	85-90	15.2	6203
95									90-95		
100									95-100		
105									100-105		
110									105-110		
115									110-115		
120									115-120		
125									120-125		
130									125-130		
135									130-135		
140									135-140		
145									140-145		
150									145-150		
155									150-155		
160									155-160		
165									160-165		
170									165-170		
175									170-175		
180									175-180		

Gama Angle Range:-90 - 90 (Deg)

Gama interval (Deg): 1

Temperature (Deg): 25

Tester:

Distance (m): 10.95

Test System: ZWL Goniophotometer System V3.0

C Angle Range: 0 - 180 (Deg)

C interval (Deg): 22.5

Humidity (%): 60

Date: 2023/9/18

Remark:

Measured Para U: 218.9V I: 255.0mA P: 54.24W PF: 0.972 Test LM: 6203.44lm		
Lamp Name:	Lamp Type:	Weight(kg):
Lamp ID:	Lamp Spec:	Shape Size:
Manufactory:	Sur(m ²):	Protect Angle(Deg):

CD Table

Gm\C(Deg)	0	20	40	60	80	100	120	140	160	180	200	220	240	260	280	300	320	340
5.0	11.1	8.43	13.4	10.7	11	10.3	7.53	8.03	4.93	2.47	2.45	1.73	2.24	2.48	3.43	4.48	4.48	7.23
10.0	83.8	74.6	102	89.5	91.4	87.8	70.9	67.1	48.1	20.2	25.5	18.4	22.7	23.6	28.7	33.4	30.4	53.9
15.0	232	198	227	220	234	228	203	204	164	114	132	108	124	131	140	152	146	174
20.0	332	330	355	363	379	381	362	340	301	251	270	241	273	290	303	309	289	322
25.0	432	373	387	412	436	435	412	390	366	343	362	375	398	402	403	408	401	400
30.0	500	448	478	481	494	499	496	498	445	438	470	480	527	533	519	507	484	484
35.0	539	507	538	550	560	564	564	560	528	522	553	582	625	624	610	604	587	564
40.0	636	566	600	618	640	638	635	657	608	586	626	663	727	732	720	710	664	628
45.0	882	748	772	770	805	819	828	883	855	858	967	932	1021	1035	1004	957	847	797
50.0	1437	1167	1162	1099	1150	1183	1227	1408	1430	1400	1618	1645	1847	1794	1671	1560	1324	1272
55.0	2206	1868	1934	1787	1795	1831	1969	2312	2197	2058	2303	2509	2897	2805	2586	2520	2357	2148
60.0	2451	2358	2773	2793	2820	2874	3058	3285	2715	2366	2473	3045	3716	3598	3264	3350	3439	2837
65.0	2013	2054	2629	3353	2916	2586	2991	3044	2534	2165	2248	2810	3112	2853	2476	2824	3548	2646
70.0	699	992	1203	1562	1084	698	909	1049	1110	1126	933	1380	1295	978	754	1047	1708	1391
75.0	170	240	347	390	256	172	237	283	239	245	212	340	318	255	215	281	430	352
80.0	56.9	71.2	102	90	62.7	56.1	72.8	83.4	64	81.8	77.5	110	93.5	81.4	81.1	102	133	86.8
85.0	29.7	31.7	29.2	28.2	24.2	24.1	27.3	27.2	32.7	42.9	41.7	46	40.8	38.5	39.6	44.1	48.8	36
90.0	21.8	22.4	21.6	20.4	17.7	17.5	19.4	19.6	21.6	26.3	27.7	27.7	25.8	23.4	23.9	26.3	26.6	24.6
95.0																		
100.0																		
105.0																		
110.0																		
115.0																		
120.0																		
125.0																		
130.0																		
135.0																		
140.0																		
145.0																		
150.0																		
155.0																		
160.0																		
165.0																		
170.0																		
175.0																		
180.0																		

Gama Angle Range:-90 - 90(Deg)

C Angle Range:0 - 180(Deg)

Gama interval(Deg): 1

C interval(Deg): 22.5

Temperature(Deg): 25

Humidity(%): 60

Tester:

Date: 2023/9/18

Distance(m): 10.95

Remark:

Test System: ZWL Goniophotometer System V3.0