

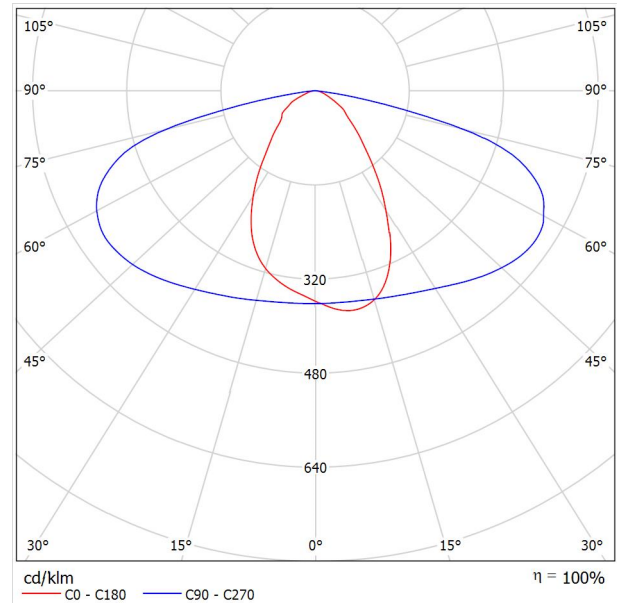


Operator
Telephone
Fax
e-Mail

/ Luminaire Data Sheet

Luminous emittance 1:

See our luminaire catalog for an image of the luminaire.



Luminaire classification according to CIE: 100
CIE flux code: 49 80 97 100 100

Due to missing symmetry properties, no UGR table
can be displayed for this luminaire.



Operator
Telephone
Fax
e-Mail

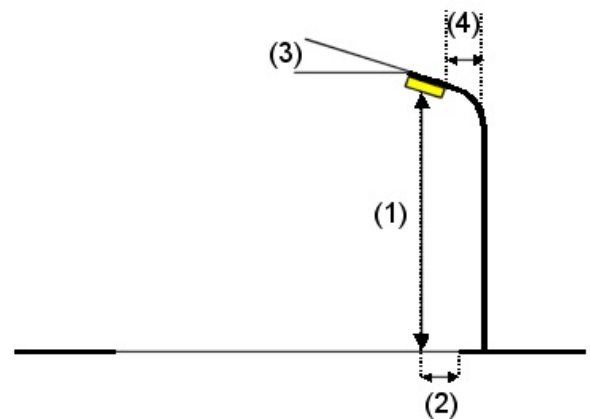
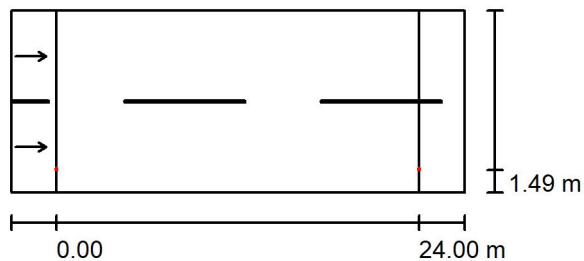
Street 1 / Planning data

Street Profile

Roadway 1 (Width: 12.000 m, Number of lanes: 2, tarmac: R3, q0: 0.070)

Maintenance factor: 0.80

Luminaire Arrangements



Luminaire:
 Luminous flux (Luminaire): 9700 lm
 Luminous flux (Lamps): 9700 lm
 Luminaire Wattage: 50.0 W
 Arrangement: Single row, bottom
 Pole Distance: 24.000 m
 Mounting Height (1): 8.000 m
 Height: 7.918 m
 Overhang (2): 1.550 m
 Boom Angle (3): 35.0 °
 Boom Length (4): 1.500 m

Maximum luminous intensities

at 70°: 431 cd/klm
 at 80°: 311 cd/klm
 at 90°: 103 cd/klm

Any direction forming the specified angle from the downward vertical, with the luminaire installed for use.

Arrangement complies with glare index class D.0.

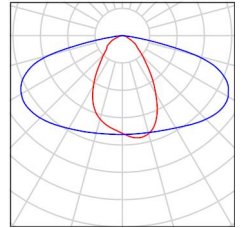


Operator
Telephone
Fax
e-Mail

Street 1 / Luminaire parts list

(Type 1)
Article No.:
Luminous flux (Luminaire): 9700 lm
Luminous flux (Lamps): 9700 lm
Luminaire Wattage: 50.0 W
Luminaire classification according to CIE: 100
CIE flux code: 49 80 97 100 100
Fitting: 1 x User defined (Correction Factor
1.000).

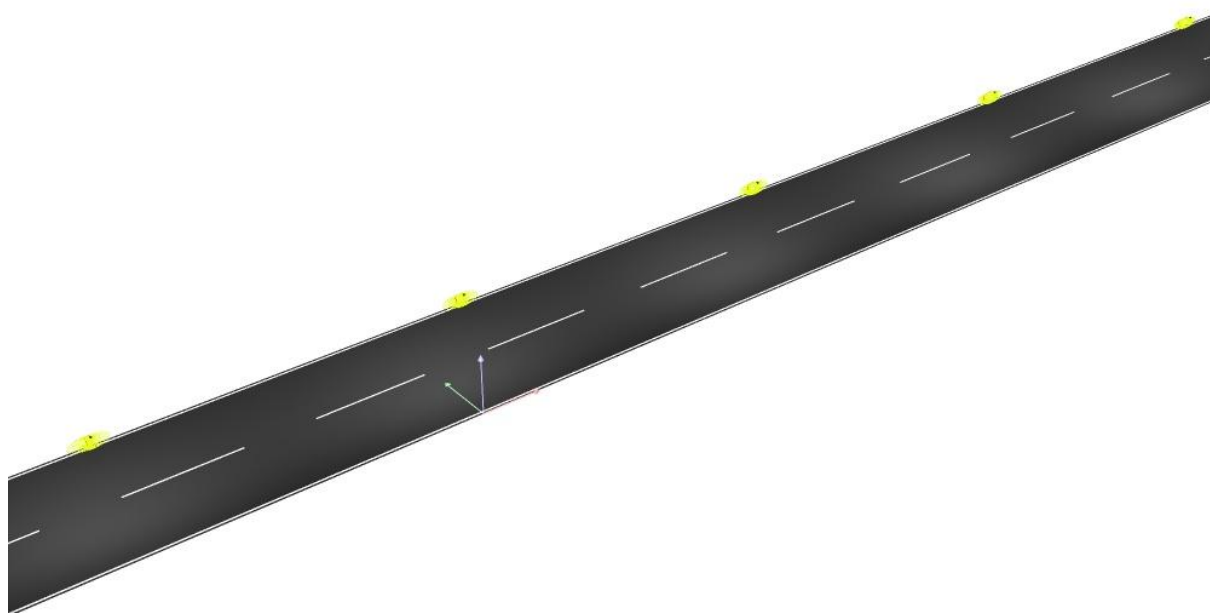
See our luminaire
catalog for an image of
the luminaire.





Operator
Telephone
Fax
e-Mail

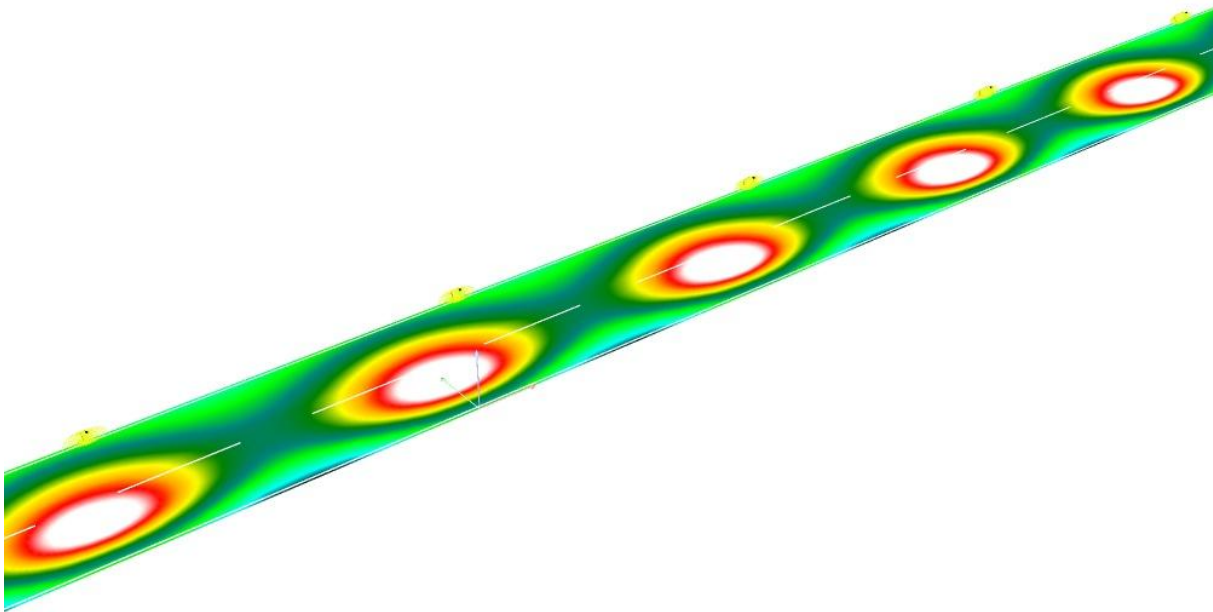
Street 1 / 3D Rendering





Operator
Telephone
Fax
e-Mail

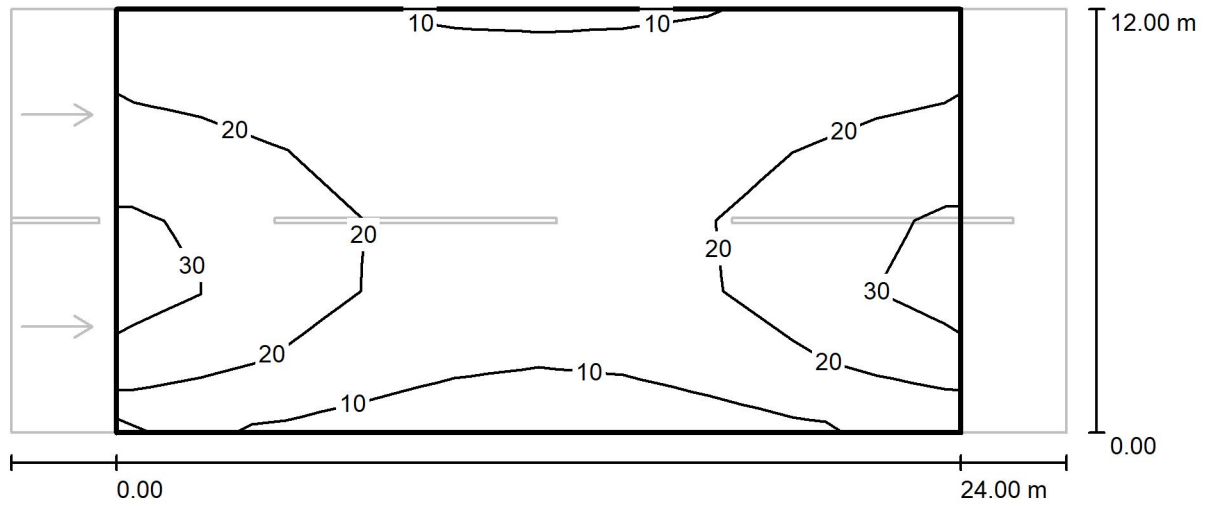
Street 1 / False Colour Rendering



5 7.13 11.25 14.38 17.50 20.63 23.75 26.88 30 lx



Operator
Telephone
Fax
e-Mail

Street 1 / Valuation Field Roadway 1 / Isolines (E)

Values in Lux, Scale 1 : 215

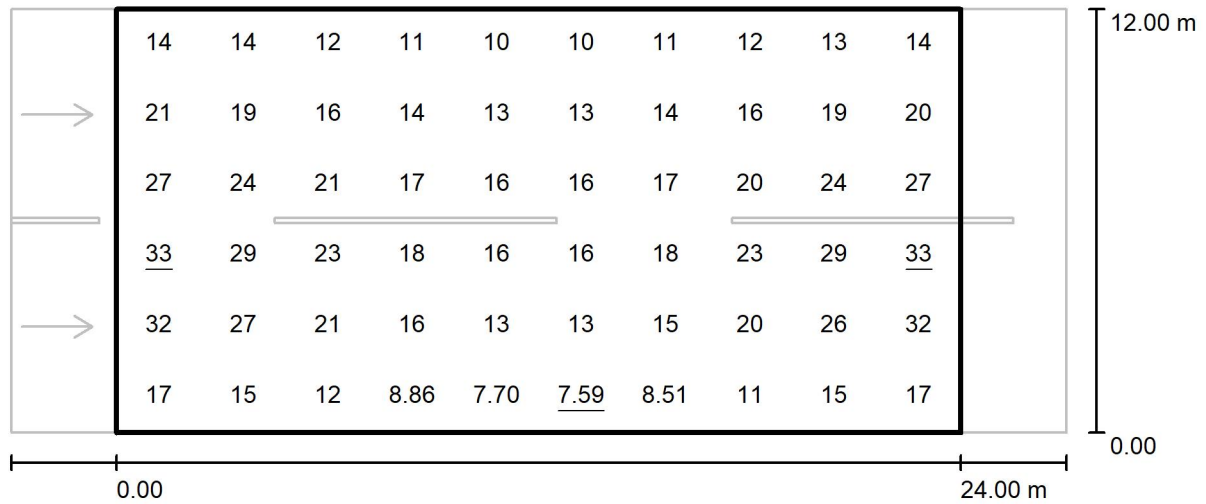
Grid: 10 x 6 Points

 E_{av} [lx]
18 E_{min} [lx]
7.59 E_{max} [lx]
33 u_0
0.425 E_{min} / E_{max}
0.229



Operator
Telephone
Fax
e-Mail

Street 1 / Valuation Field Roadway 1 / Value Chart (E)



Values in Lux, Scale 1 : 215

Grid: 10 x 6 Points

E_{av} [lx]
18

E_{min} [lx]
7.59

E_{max} [lx]
33

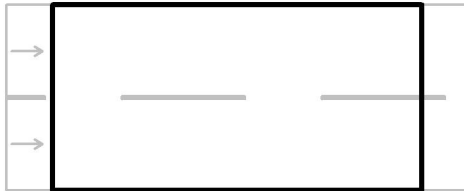
u_0
0.425

E_{min} / E_{max}
0.229



Operator
Telephone
Fax
e-Mail

Street 1 / Valuation Field Roadway 1 / Table (E)



11.000	14	14	12	11	10	10	11	12	13	14
9.000	21	19	16	14	13	13	14	16	19	20
7.000	27	24	21	17	16	16	17	20	24	27
5.000	<u>33</u>	29	23	18	16	16	18	23	29	<u>33</u>
3.000	32	27	21	16	13	13	15	20	26	32
1.000	17	15	12	8.86	7.70	<u>7.59</u>	8.51	11	15	17
m	1.200	3.600	6.000	8.400	10.800	13.200	15.600	18.000	20.400	22.800

Attention: The coordinates refer to the image above. Values in Lux.

Grid: 10 x 6 Points

E_{av} [lx]
18

E_{min} [lx]
7.59

E_{max} [lx]
33

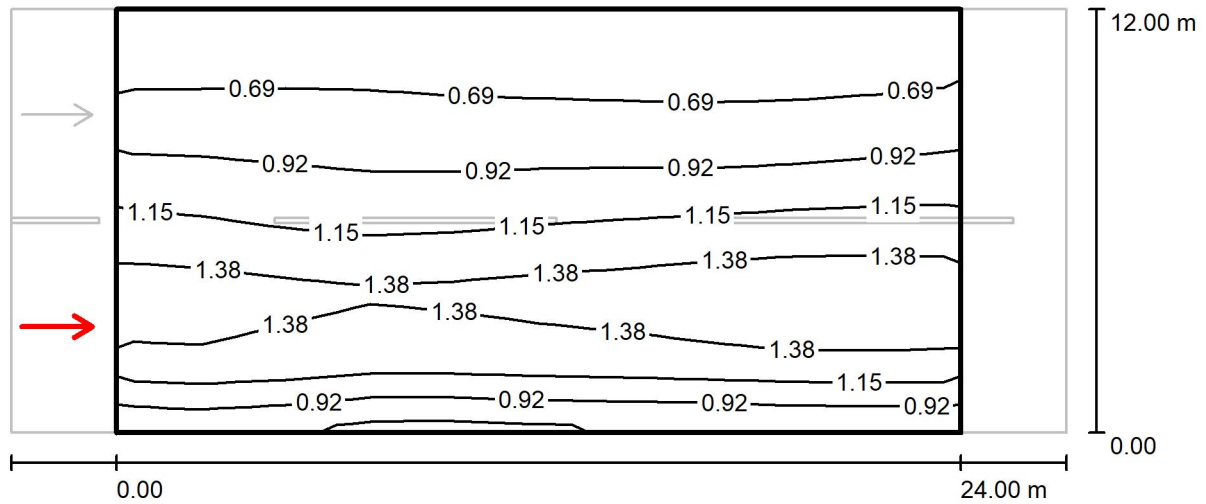
u_0
0.425

E_{min} / E_{max}
0.229



Operator
Telephone
Fax
e-Mail

Street 1 / Valuation Field Roadway 1 / Observer 1 / Isolines (L)



Values in Candela/m², Scale 1 : 215

Grid: 10 x 6 Points

Observer Position: (-60.000 m, 3.000 m, 1.500 m)

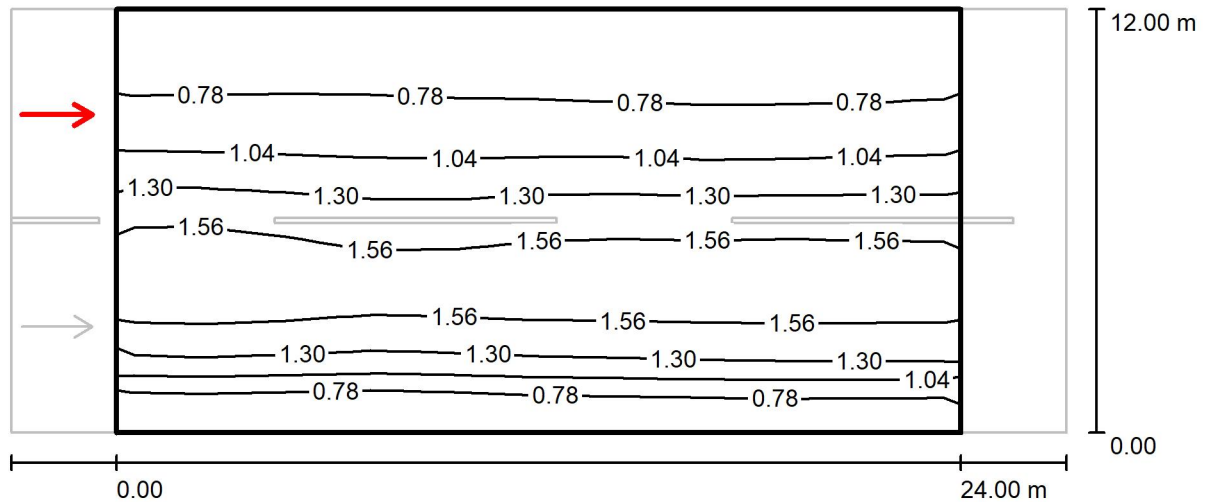
tarmac: R3, q0: 0.070

	L_{av} [cd/m²]	U0	UI	TI [%]
Calculated values:	1.04	0.51	0.94	11
Required values according to class ME4a:	≥ 0.75	≥ 0.40	≥ 0.60	≤ 15
Fulfilled/Not fulfilled:	<input checked="" type="checkbox"/>	<input checked="" type="checkbox"/>	<input checked="" type="checkbox"/>	<input checked="" type="checkbox"/>



Operator
Telephone
Fax
e-Mail

Street 1 / Valuation Field Roadway 1 / Observer 2 / Isolines (L)



Values in Candela/m², Scale 1 : 215

Grid: 10 x 6 Points

Observer Position: (-60.000 m, 9.000 m, 1.500 m)

tarmac: R3, q0: 0.070

	L_{av} [cd/m²]	U0	UI	TI [%]
Calculated values:	1.15	0.48	0.92	8
Required values according to class ME4a:	≥ 0.75	≥ 0.40	≥ 0.60	≤ 15
Fulfilled/Not fulfilled:	<input checked="" type="checkbox"/>	<input checked="" type="checkbox"/>	<input checked="" type="checkbox"/>	<input checked="" type="checkbox"/>